

# ESCAPE TO A TROPICAL PARADISE

*Why Not Sri Lanka ?*

Maple Holiday Villas (Pvt.) Ltd.  
61A 4th Lane, Epitamulla Rd.,  
Pita Kotte  
[www.mapleholidayvillas.com.au](http://www.mapleholidayvillas.com.au)  
+94 776329250

Maple Holiday Villas  
85 Walnut Street,  
Wynnum , QLD 4178  
[www.mapleholidayvillas.com.au](http://www.mapleholidayvillas.com.au)  
+61 444519086

Sri Lanka, an Island known as Ceylon since the British colonization period. Also, some famous writers say it is the pearl of the Indian ocean.

This tropical paradise is well known among European travelers due to its natural beauty and warm welcoming people.

Beautiful beaches, coral gardens and sea turtle encounters, UNESCO heritage listed historic sites and ruins of ancient civilizations and tropical wildlife will certainly give you unforgettable memories and keep you happy during your stay.

We, "Maple Holiday Villas" are currently managing a few holiday accommodations in its popular holiday destinations and are offering similar standards to our holiday accommodations in Australia.

[www.mapleholidayvillas.com.au](http://www.mapleholidayvillas.com.au)

## Colombo



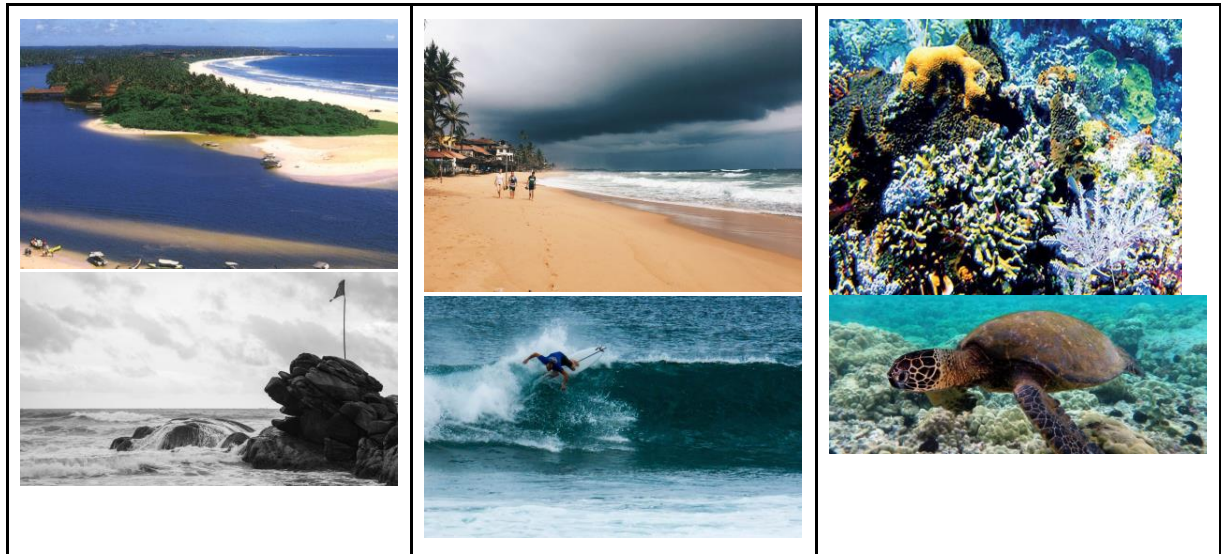
Colombo district is the most commercialized and highly populated area in Sri Lanka. When you travel to Sri Lanka you will first land in Colombo's Katunayaka Airport. Dehiwala zoo, Colombo Museum, Lotus tower, Diyatha Wetland park, Beddagana Bird's park, Kotte Parliament and ruins of ancient Kotte kingdom are popular attractions for the guests. There are a number of quality restaurants and shopping malls in this city.

Mostly the transit tourism in Colombo apart from the people who are coming to business visits. After taking a long flight, you could stay a couple of nights in Colombo and relax before taking your adventure or stay the last two nights of your holiday before going back to the airport or you could be on a very short visit to Sri Lanka and do not have enough time to travel far.

The Elephant dances in Dehiwala zoo, kids activities in Diyatha wetland park etc. will keep your child engaged and able to get unique experiences for the first time in their life.

Maple Holiday Villas' Villa 61 and 61A are private self-contained 4 bedroom villas located in the capital of Sri Lanka waiting for your reservation.

## Beautiful Beaches



*Bentota Beach*

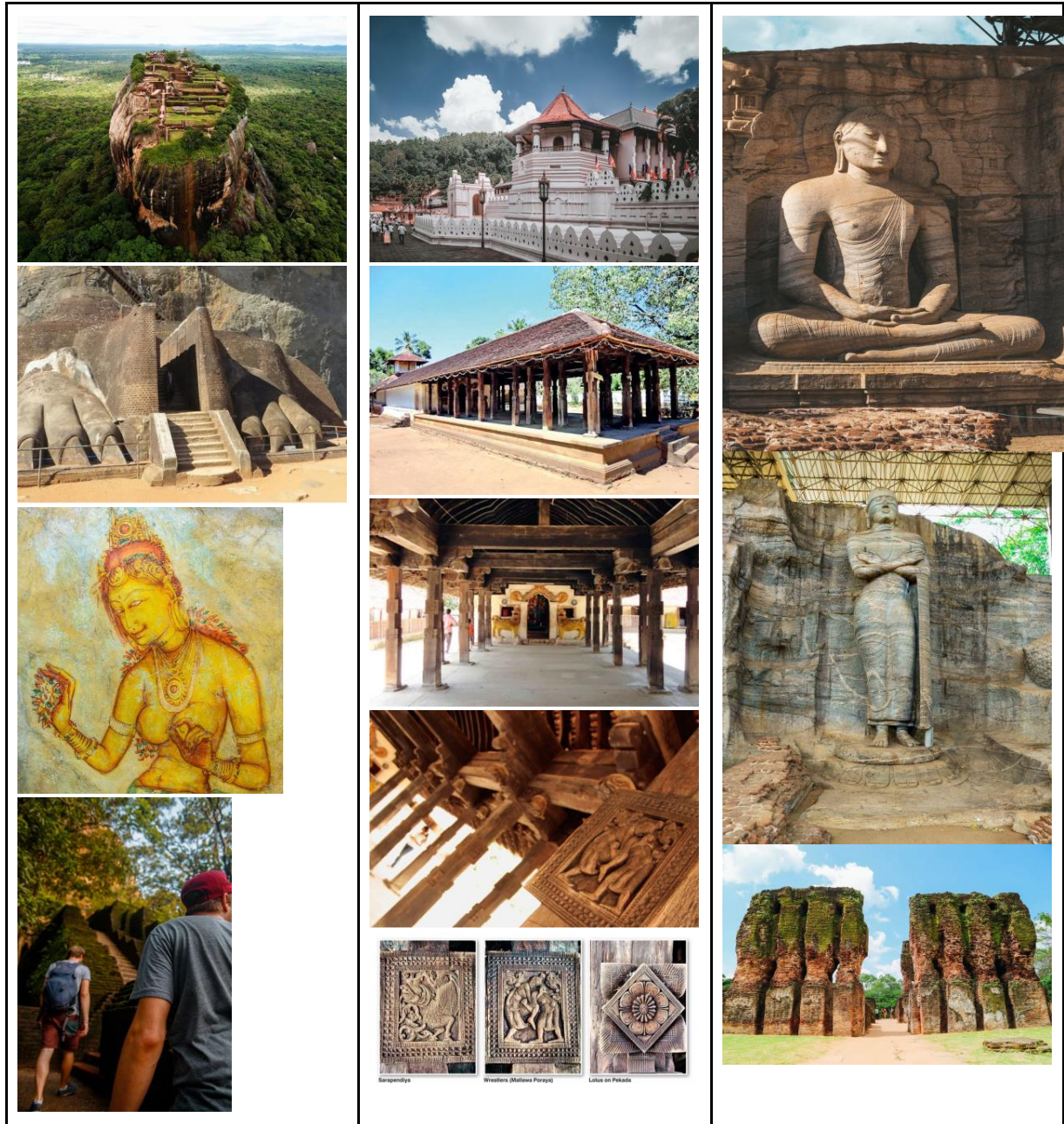
*Hikkaduwa Beach*

Sri Lanka is an island in the Indian ocean. Due to its beautiful beaches and welcoming tropical climate many European people spend their holidays as an escape from the harsh winter season in Europe.

Holiday makers have spent most of their time in Bentota and Hikkaduwa tourist zones while enjoying the beauty of the landscape created with Bentota river and UNESCO listed Hikkaduwa coral garden.

While taking this as an advantage, we “Maple Holiday Villas”are managing a six bedroom classic villa in Bentota exclusively for families who love to spend high end holidays. Our “Coral Village ” holiday compound located 5 Km before the Coral Garden in Hikkaduwa which offers 5 beachfront single bedroom detached dwellings and five of 4 bedroom private villas for those who are on budget and high end holidays.

## Ruins of Ancient Civilizations



*Sigiriya*

*Candy*

*Polonaruwa*

Sri Lanka is a country with over 2500 years of civilization. There are a number of UNISCO listed world heritage sites around the island.

## Commercial plantations and breathtaking views



*Tea Plantations*

*Rubber Plantations*

*Cinnamon Plantations*

Tea and rubber plantations have contributed a lot to Sri Lanka's economy since the British colonization period. These sites are attractive to guests because of the beautiful views and non-disturbing surroundings. And also those who are looking for a few days of a countryside escape.

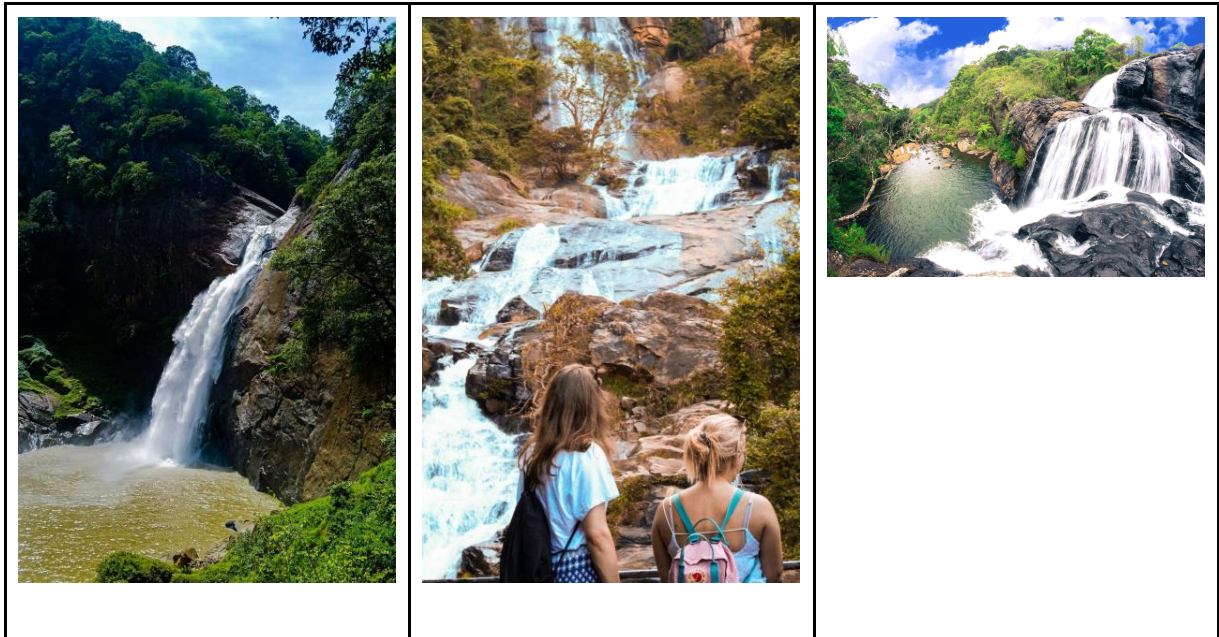
Maple Holiday Villas are currently developing a camping site at its Maple Plantations in Awittawa, which is easily accessible from Bentota and Hikkaduwa tourist zones. And are planning to offer cabins type accommodations, dining facilities, natural wildlife encounters, bathing facilities in rock pools, canoeing in canals of Bentota river, rifle shooting and much more.

## Safari Parks



Sri Lanka is home to wild animals such as Elephants, Leopards, Bears, Deers, etc. and there are a number of wildlife parks in southern and northern Sri Lanka. The Yarla, Kumana, Udawalawa etc. safari parks are open to visitors during the day.

## Waterfalls



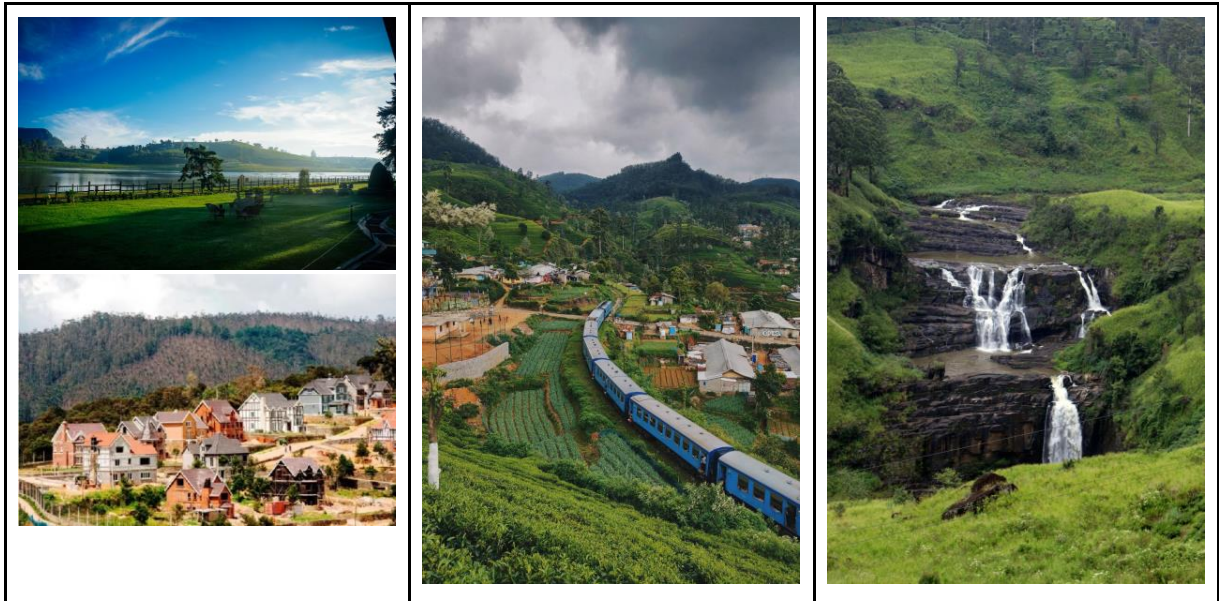
*Dunhida Falls*

*Ravana Falls*

*Baker's Falls*

Dunhida, Diyaluma, Ravana, Baker's etc. falls are attractive tourist hot spots among thousands of waterfalls in this Island.

## Little England



Nuwara Eliya is a unique spot in Sri Lanka where it doesn't look like a part of Sri Lanka at all. Nuwara Eliya, nicknamed "Little England" of Sri Lanka for its chilly climate and colonial style bungalows, is situated at an elevation of 1,868 m in the misty hills of central Sri Lanka. Nuwara Eliya's European-style environment is a result of the city once being a retreat for colonial planters and high-society.